



# MARIN BONSAI CLUB

2023 April Newsletter

PRESIDENT'S MESSAGE

ACCENT PLANTS  
WITH ERIC  
SCHRADER

YARDADORI DIG RECAP

SF CHERRY BLOSSOM  
FESTIVAL



MARINBONSAI.ORG

# ACCENT PLANTS

The Marin Bonsai Club meets every First and Third Tuesday of each month at the Terra Linda Community Center Room 4 from 7-9:30 PM.

The next board meeting will be on Monday, April 10 at 7:15pm on Zoom. Please contact Tung if you would like to attend.

#### **COVER PHOTO**

A close up of a companion or accent plant from the Pacific Bonsai Expo. Photo by Candace Key.

#### **COVID HEALTH STATEMENT**

Masks are no longer required for fully vaccinated attendees. They are welcome for those who wish to wear them.

#### **MARIN BONSAI CLUB BOARD MEMBERS AND OFFICERS**

**PRESIDENT**  
Tung X. Dao

**SECRETARY**  
Brendan Crotty

**TREASURER**  
Marcia Summers

**BOARD MEMBERS**  
Gwynessa Aetherwyn  
Daniel Keller  
Susan Sullivan

**BGLM DOCENT COORDINATOR**  
Art Wasserman

**MEMBERSHIP**  
Daniel Keller

**NEWSLETTER EDITOR**  
Tung X. Dao

**PROGRAM CHAIR**  
Candace Key

**WEBMASTER**  
Sharon Bone

Reach us at  
[info@marinbonsai.org](mailto:info@marinbonsai.org)

Join our Discord  
<https://discord.gg/us25mAsn5A>

©2023 Marin Bonsai Club

## **PRESIDENT'S MESSAGE**

BY TUNG X. DAO

So many events happened last month. The rain, buds pushing, the yardadori dig, and the wiring workshop! Let's start with a bonsai tip.

The rain continues here in Marin. But that means you must still keep an eye on your trees' watering needs. Some trees will not need any water, but others will need some hand watering. The foliage creates a rain shadow on the pot that may keep the soil dryer than you think. The more you know,

#### **COMPANION PLANTS WITH ERIC SCHRADER**

This month, we have Eric Schrader of *Bonsaify* presenting all about companion plants and accent plants. These plants accompany a bonsai in a typical display.

There will be a raffle, so please feel free to bring in items you'd like to donate to the club.

See the blurb on the next page for more details.

#### **NEW CLUB MAILING ADDRESS**

The club now has a new mailing address. The old PO box was close to our old home, the Marin Art and Garden Center.

However, since we regularly meet at the Terra Linda Community Center, we will be moving our PO Box closer. Our new mailing address is:

**Marin Bonsai Club**  
**PO Box 6645**  
**San Rafael, CA 94903**

#### **CHERRY BLOSSOM FESTIVAL**

The club will be attending the Cherry Blossom Festival in support of the event. On April 15, the club will arrange some carpools

and enjoy the celebrations. Please RSVP [bit.ly/marinbonsai-rsvp](https://bit.ly/marinbonsai-rsvp) so we can arrange carpools for the event.

We will meet at 10am and go for the majority of the day. If you are able to offer rides to the event, please let us know in the RSVP so we can coordinate.

#### **REBS INVITATION**

Our club has been invited to an event hosted by REBS that our membership might find interesting. Below are the details provided by Alan Murakami, the president of REBS:

*Darren Wong is just returning from another apprenticeship period in Japan, focusing on azaleas. The demo tree—yes—will be an azalea which was imported from Japan.*

*Date: Thursday, April 27. 7:15 pm (socializing), 7:30 start.*

*At the Rohnert Park Community Center, 5401 Snyder Ln, Rohnert Park.*

#### **WIRING DEMO, CONTINUED!**

The wiring demonstration was a success. Members from both Marin Bonsai and REBS attended. Senior members brought in fantastic examples of trees that have been wired up for the students to study.

The good news is that we still have some extra supplies. The 3rd Tuesday open workshop will be another opportunity for those who could not make it last time due to the rain to do a mini-wiring workshop with me. 🌱



# Accent Plants

## ACCENT PLANTS WITH ERIC SCHRADER

BY CANDACE KEY, PROGRAMS CHAIR

For our April 4 meeting the Marin Bonsai Club will host Eric Schrader who will be presenting a program on accent or companion plants. These are the small plant groupings often seen accessorizing a bonsai display and there is a real art and logic to creating them. Eric will give us some context for the use of these intriguing little creations as well as putting a few together during the presentation. One of the great things about accent groupings is that they are easier to create and maintain—usually—than bonsai. So even if you aren't ready to take on a larger bonsai project, creating accent plantings could be more, or just as fulfilling.

Plants used in accent plantings can be ferns, grasses, sedums, flowering plants and even weeds. Members are encouraged to bring any small plants they have in their gardens, or pull out of the cracks of their driveway, to possibly be used in the accent plantings. One or more of these delightful ensembles will be raffled off at the end of the evening.

### ABOUT ERIC SCHRADER

He has been in bonsai over 15 years and quickly became a noted artist and educator in the Bay Area bonsai scene. A member, and often president, of the San Francisco Bonsai

Society many of you will recognize Eric from bonsai shows locally, and most recently, the co-producer with Jonas Dupuich of the Pacific Bonsai Expo this past fall. Several of Eric's spectacular bonsai were featured there.

A few years ago Eric and his wife Dory created Bonsaify, a website offering trees for beginning bonsai students as well as many pots and products useful in the development of bonsai. Their goal in creating Bonsaify is to help individuals open themselves to the beauty and possibilities of nature through bonsai, and they specialize in mini bonsai that anyone can easily care for and enjoy. Eric will bring a small selection of bonsai pots and small trees for sale, so you might want to arrive early for the first look.

### FURTHER READING

If you would like more information about Eric and Bonsaify you can check him out below, and Jonas Dupuich has many articles in his archives in Bonsai Tonight on accent plants which you will find educational and inspiring.

<https://www.bonsaify.com/pages/about-us>

<https://bonsaitonight.com/2019/04/26/learning-about-accent-plants-at-bonsai-on-the-bayou/>



**Right:** Two examples of accent plants from the Pacific Bonsai Expo. *Photos by Candace Key.*

## UPCOMING CLUB EVENTS

### APRIL

#### COMPANION PLANTS

On **April 4**, Eric Schrader will be doing a demonstration on companion plants. These are small accent plants that accompany a bonsai in a 2 or 3 point display. They're their own hobby and art in their own right.

This will be a wonderful demonstration! Hope you will be able to join us then.

#### CHERRY BLOSSOM CLUB TOUR

On **April 15th**, the club will be attending the San Francisco Cherry Blossom Festival to experience the festivities and fun. Please RSVP to assist with carpools.

#### GENERAL WORKSHOP

The **third Tuesday** will feature our open workshop. The special focus topic will be announced.

Since there are some extra supplies, a mini-wiring workshop will be hosted for

those who could not make it to the March wiring demonstration.

### MAY

#### MEMBER TREE REVIEW

Our very own John Doig, Chris Ross, and Dan Keller will lead a member tree review on **May 2**. Bring in those trees that you want group feedback on and we'll suggest improvements to them.

#### GENERAL WORKSHOP

The **third Tuesday** will feature our open workshop. The special focus topic will be announced.

### JUNE

#### DEMONSTRATION WITH JAY MCDONALD

Topic to be announced. 🌳

## AVAILABLE CLUB POSITIONS

We have a few positions available if you are able to help the club out.

#### NEWSLETTER

The newsletter one is an interesting one because I'll be mentoring you on the art of layout editing. I'll need a little assistance in the long term making these very important newsletters for the club. (Don't worry, I'll continue doing it for as long as I my schedule allows.)

If this is something you're interested in

learning, let me know and I'll be happy to teach you how to use InDesign or similar to produce these newsletters!

#### TREASURER

Help manage and the club's treasury and books. Its easier than you think!

#### CLUB HISTORIAN

Help digitize historic club documents and document current activities.

## BGLM DOCENTS

Our club has a commitment to support the broader bonsai community. One of the ways we do this is by being a docent at the Bonsai Gardens at Lake Merritt.

Docenting there is a joy and it's not difficult. If you are a first timer, please talk with an experienced member about what it's like to help out at the Gardens.

Your visit there will inspire you. The Gardens has dozens of masterfully crafted trees with rich histories. *Beginners are strong encouraged to docent with an experienced member in their first year.* It will be an eye-opening experience for you.

Please contact Art to see when the next available docent spot is.

#### NEWSLETTER SUBMISSION DEADLINES

Got something you'd like to include in the newsletter? The deadline for submission is the 15th of each month. Please send any materials to Tung at [tung@marinbonsai.org](mailto:tung@marinbonsai.org).



# Yardadori Dig

**Right:** The collected tree after being repotted.

**Following pages:** Moments from the dig, featuring the people involved to the trees themselves at various moments throughout the day.

## OUR YARDADORI DIG

BY TUNG X. DAO, WITH PHOTOS FROM TUNG AND AMY PERTSCHUK

Last month, we had a team of 4 people from 3 different clubs across the Bay Area attend our yardadori dig in the East Bay.

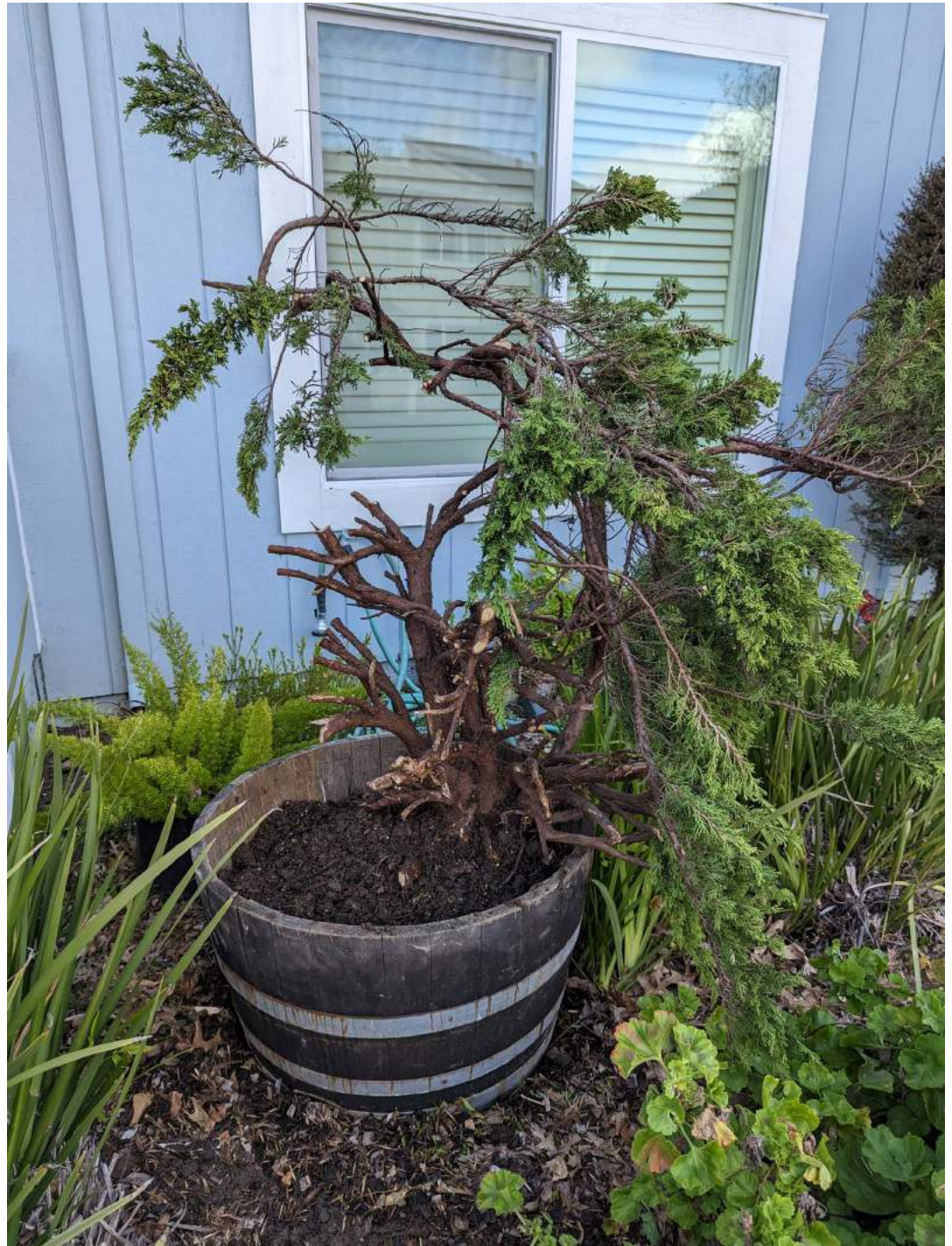
Amy from Marin, Justin from REBS, Pete from Midori, and myself started looking at the incredibly dense swath of junipers. 60 years will create some very dense growth.

We started at 9am. Just to make things exciting, the first thing we noticed was that

there was poison oak on one corner of the yard. Luckily, we were able to avoid that section of the yard.

After cutting our way through the foliage for almost an hour, we finally found some trunks. Let me tell you, these trunks were crazy, twisted, and gnarly.

Amy and I decided to team up, as it had taken an hour already and we've only cleared







enough to see the trunk. We still had to clear enough room for us to dig up the tree!

Lots of tools were involved. I worked with mostly bonsai tools. They were small, but mighty. I brought a reciprocating saw and two batteries. This tool was indispensable as we started digging and needed to cut very thick roots and branches.

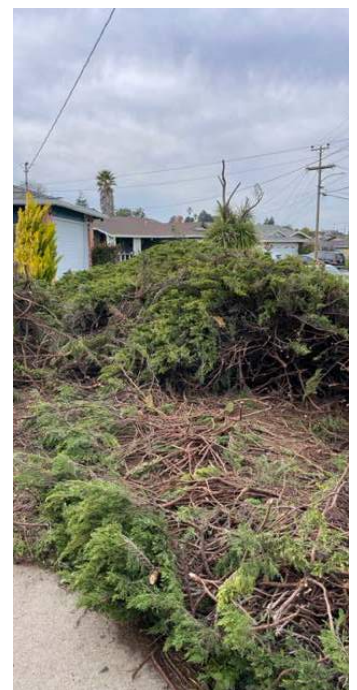
Justin was very quick in collecting his tree. He chose a smaller and easy-to-remove tree and was done by noon. The rest of us had a lot more work ahead of us, though.

Pro tip: Bring all the batteries you have for the reciprocating saw. You'll be glad to have them. The whole day was punctuated by calls of "Loppers!", "Sawzall!", and "Shovel!", much like what we would imagine a surgical

team might do (hopefully with different tools! 😂)

We ran out of battery for the reciprocating saw towards the end of the day and progress slowed significantly. Luckily, I had a small bonsai saw that saved the day when we needed to make one final root cut to get Pete's tree out of the ground. We tried everything before that, including running to the hardware store and buying an ax in a desperate attempt to make that final cut.

For all the trees, we cleared the foliage around the tree to get access to the trunk.





We then started digging the rootball up and clearing thick roots away. We always made sure that the tree had enough green on top. It's very easy to cut away all of the foliage as it has grown very convolutedly.

By 5pm that day, all three trees had been dug up and collected. Lots of sore muscles, scratched up arms, and sweat went into the dig. Amy and I decide to donate a portion of the tree's proceeds to the club, assuming it gets healthy enough in a few years to be presented at a demonstration.

Pete was kind enough to drive our tree back to Novato since Amy and I brought rather small sub-compact cars to the dig.

All in all, it was an amazing experience to experience the raw power of 60 years of growth. I would like to thank our host, Miguel, who was kind enough to let us collect. I also want to thank Robert for the lead that led to this event. 🙏





# Previously

Photos from our previous demonstration with Tung Dao. In addition to the wiring workshop that was attended by both MBC and REBS members, Jay McDonald was presented with his honorary membership for his achievements and contributions to the club. The bottom two images are examples of wired trees brought in by Jay. Photos by Candace Key, bottom right photo by Dan Keller.





# Bonsai Events

Events from the Golden State  
Bonsai Federation website.  
[https://www.gsbfbonsai.org/  
events](https://www.gsbfbonsai.org/events)

## CHICO BONSAI SOCIETY SHOW

**SATURDAY AND SUNDAY  
APRIL 1-2, 2023**

**CHICO, CA**

Drop Leo Martin a line to get show details: [leormartin@gmail.com](mailto:leormartin@gmail.com).

## MODESTO BONSAI CLUB SHOW

**SATURDAY, APRIL 15, 2023  
10:00 AM – 4:00 PM**

**STANISLAUS AGRICULTURAL  
HARVEST HALL  
3800 CORNUCOPIA WAY  
MODESTO, CA 95358**

Join us for our 40th annual Bonsai and Suiseki show.

We will have sales of trees, pots, tools, and other bonsai related items throughout the day.

A demonstration will be presented by Sam Adina at 1:30 pm.

For more information contact: Peter Camarena: [pete.camarena@sbcglobal.net](mailto:pete.camarena@sbcglobal.net)

## AMERICAN BONSAI ASSOCIATION, SACRAMENTO (ABAS)

**SATURDAY APRIL 08, 2023  
APR 08, 10:00 AM – APR 09, 4:00 PM**

**3330 MCKINLEY BLVD  
SACRAMENTO, CA 95816**

The American Bonsai Association, Sacramento's (ABAS) 63rd Annual Spring Bonsai & Suiseki Show and Sale will feature headliner, Todd Schlafer of First Branch Bonsai. Demonstrations will take place both Saturday and Sunday at 1:30 PM.

In addition to a our quality exhibition, there will be a large vendor area and consignment sales area! A daily benefit raffle will include each day's demonstration trees and many more bonsai and bonsai related items. A beginners workshop will be offered Saturday morning. For more information, check out [abasbonsai.org](http://abasbonsai.org) or call Dodie Newman at 916-799-9575 or 916-801-4424

## MODESTO BONSAI CLUB SHOW

**SATURDAY, APRIL 15, 2023  
10:00 AM – 4:00 PM**

**STANISLAUS AGRICULTURAL  
HARVEST HALL  
3800 CORNUCOPIA WAY  
MODESTO, CA 95358**

Join us for our 40th annual Bonsai and Suiseki show.

We will have sales of trees, pots, tools, and other bonsai related items throughout the day.

A demonstration will be presented by Sam Adina at 1:30 pm.

For more information contact: Peter Camarena: [pete.camarena@sbcglobal.net](mailto:pete.camarena@sbcglobal.net)



**KUSAMURA BONSAI CLUB**

**April 29 - 30, 2023**

Addison School  
650 Addison Street  
(Entrance at 1045 Webster)  
Palo Alto, CA

Saturday, Noon-4PM  
Sunday, 11AM-4PM

Children's Corner  
Open both days

Club Member  
Demonstrations  
at 1:30 each day



**KUSAMURA BONSAI CLUB**  
**APRIL 29- 30, 2023**  
ADDISON SCHOOL AT 650 ADDISON  
PALO ALTO  
Entrance to the show is around  
the corner at 1045 Webster



For more information contact show co-chairs:  
Idris Anderson | idrisan@gmail.com  
Marsha Mekisich | springhill.2@outlook.com

DEMONSTRATIONS STARTING  
AT 1:30 BOTH DAYS  
PRESENTED BY  
KUSAMURA BONSAI CLUB MEMBERS

- OVER 60 BONSAI ON DISPLAY
- SIGNUPS FOR BEGINNER WORKSHOP
- SALES AND BENEFIT DRAWINGS
- CHILDREN'S CORNER
- TOURS OF THE BONSAI
- EDUCATIONAL GUIDE

ADMISSION IS FREE



www.kusamurabonsai.org  
PUBLIC HEALTH GUIDELINES WILL BE FOLLOWED

## KUSAMURA BONSAI CLUB

Free Admission



**63<sup>rd</sup> Annual Show**

**April 29 – 30, 2023**

Addison School  
650 Addison Street  
Palo Alto, CA 94301

Saturday, Noon-4PM  
Sunday, 11AM-4PM

**Headliner: Michael Greenstein**  
**Saturday 1:30**

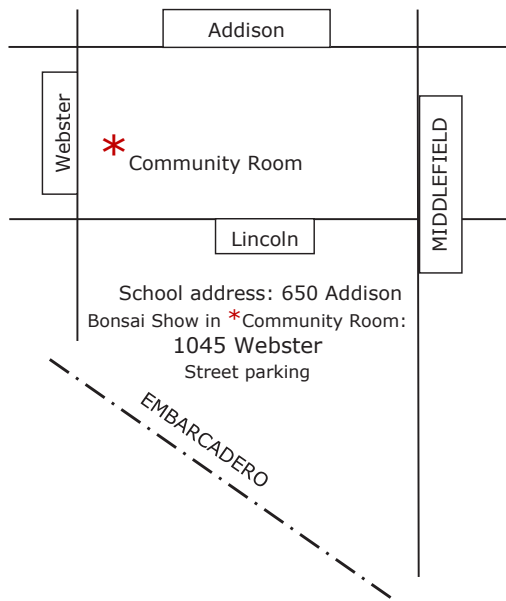
*\*School address is 650 Addison. Entrance to the Show is around the corner at 1045 Webster*

- Over 60 Bonsai Trees on display.
- Sunday demonstration at 1:30 provided by club members
- Sale and Benefit Drawing: over 100 bonsai and pots
- Kids' Corner: for children of whatever age to make a bonsai accent of their own

For more information contact show co-chairs:

Idris Anderson | idrisan@gmail.com // Marsha Mekisich | springhill.2@outlook.com

Please see [www.kusamurabonsai.org](http://www.kusamurabonsai.org) for more details





## **SAN DIEGO BONSAI CLUB SHOW**

**SATURDAY APRIL 29, 2023**  
**10:00 AM – 5:00 PM**

**BALBOA PARK**  
**CASA DEL PRADO**

**SAN DIEGO, CA**

For more information contact Ignacio De  
La Torre  
Email: [igdlt@att.net](mailto:igdlt@att.net)

## **KUSAMURA BONSAI CLUB EXHIBIT, SALE AND DEMONSTRATION**

**SATURDAY AND SUNDAY, APRIL 29-30,**  
**2023**

**12:00 PM – 4:00 PM**

**ADDISON SCHOOL**  
**1045 WEBSTER**  
**PALO ALTO, CA**

Demonstrations starting at 1:30 both  
days, followed by benefit raffle and door priz-  
es. Saturday Demonstration given by Michael  
Greenstein. Over 60 bonsai on display.

Venue Name: Addison School

Street Address: 650 Addison Street  
with event entrance around corner at 1045  
Webster in Palo Alto, CA

Large sale area, guided show tour,  
Doctor Bonsai, educational guide and chil-  
dren's corner. For more information contact  
show co-chairs: Idris Anderson|[idrisan@  
gmail.com](mailto:idrisan@gmail.com) Marsha Mekisich|[springhill.2@  
outlook.com](mailto:springhill.2@outlook.com)

Phone: (+1) 650-477-4761

## **THE SACRAMENTO BONSAI CLUB'S 77TH ANNIVERSARY SHOW**

**SATURDAY, MAY 06, 2023**  
**11:00 AM – 4:00 PM**

**2401 RIVERSIDE BLVD**  
**SACRAMENTO, CA 95818**

Join us for our 77th ANNIVERSARY  
SHOW of Bonsai and Suiseki. It is One-Day  
Only! Free admission/donation, raffle draw-  
ings, large members' sale of bonsai-related  
materials. Demonstration at 1:30pm.

[juddbonsai@att.net](mailto:juddbonsai@att.net)

[www.sacbonsaiclub.com](http://www.sacbonsaiclub.com)

Phone: (+1) 19163008103

## **SANTA CRUZ BONSAI KAI EXHIBIT & SALE**

**SATURDAY, MAY 13, 2023**  
**10:00 AM – 4:00 PM**

**2555 MAR VISTA DR**  
**APTOS, CA 95003**

Join us for the Show & Sale but stay for  
the Demonstration at 1pm.

For more information contact Helen Klee  
831-462-5829. [www.santacruzbonsaikai.com](http://www.santacruzbonsaikai.com)



## **BAY AREA SATSUKI AIKOKAI & YAMATO BONSAI KAI'S SHOW**

**BASA DEMO: SAT, MAY 20TH 1-3 PM**  
**YAMATO DEMO: SUN, MAY 21ST 1-3 PM**

**LAKESIDE PARK GARDEN CENTER, 666  
BELLEVUE AVE, OAKLAND, CA 94610**

These two clubs joint show offers Azalea in full bloom and fine bonsai in formal displays.

Large member tree sales and imported Japanese material vendor area • Free admission • Public parking

For more information: <http://satsukiazaleabonsai.org/>

Contact Darren Wong: [Sohjuen@aol.com](mailto:Sohjuen@aol.com)

## **SEI BOKU BONSAI KAI SHOW**

**WITH WORLD RENOWNED  
SPECIAL GUEST DEMONSTRATOR  
DAVID DE GROOT**

**SATURDAY AND SUNDAY, JUNE 3 AND 4,  
2023**  
**10:00 AM – 4:00 PM**

**SAN MATEO GARDEN CENTER  
605 PARKSIDE WAY  
SAN MATEO, CA 94403**

In addition to show, world renowned special guest demonstrator David De Groot will provide demo Saturday 1-3pm, with Demo tree raffle following. Sunday 1-3pm, David will lead an open to public viewing workshop, with workshop tree raffled after. Both days 3pm benefit raffle and door prizes.

Tree Clinic—Vendor Sales—Plant Sales—Free Admission

For additional information: Marsha Mekisich [springhill.2@outlook.com](mailto:springhill.2@outlook.com)

Phone: (+1) 650-477-4761

## **EAST BAY BONSAI SOCIETY ANNUAL AUCTION**

**WEDNESDAY JUNE 14, 2023**  
**7:00 PM – 9:00 PM**

**LAKESIDE PARK GARDEN CENTER  
666 BELLEVUE AVE  
OAKLAND, CA 94610**

The East Bay Bonsai Society will be having an in-person bonsai auction on Wednesday, June 14th at 666 Bellevue Ave., Lakeside Park Garden Center (Lake Merritt) in Oakland, California! The auction will start at 7:30pm with a preview at 7:00pm. It will include established and starter bonsai trees, pots, tools, etc. Credit cards, checks, and cash accepted. Free admission. Parking available. Sales tax will be added to purchases. Masks are required.

The East Bay Bonsai Society's in-person bonsai auction on will start at 7:30pm with a preview at 7:00pm. More? Email: [mhyllton@rocketmail.com](mailto:mhyllton@rocketmail.com)



## **REBS 37TH ANNUAL BONSAI SHOW**

**SATURDAY, AUGUST 26, 2023**  
**10:00 AM – 5:00 PM (4PM SUNDAY)**

**5401 SNYDER LN**  
**ROHNERT PARK, CA 94928**

The return of the Redwood Empire Bonsai Society hosting its 37th Annual Bonsai Show. New modern facilities with AC. Featuring the international renowned bonsai artist Ryan Neil as guest demonstrator.

## **SIERRA BONSAI CLUB SHOW**

**SEP 23, 10:00 AM – SEP 24, 4:00 PM**

**3192 BOYINGTON RD**  
**PENRYN, CA 95663**

The Sierra Bonsai Club will display bonsai and suiseki in the temple as well as outdoors in conjunction with the Placer Buddhist Church Food & Cultural Festival Bazaar all weekend.

Dine in the outdoor covered tents with friends/family, visit cultural booths of food and crafts, bingo, entertainment, & children's games. A bonsai demonstration will be in the program inside the temple. The bonsai will be auctioned at the completion of the demonstration. Winner must be in attendance.

Phone: (+1) 9163008103

## **YAMATO BONSAI KAI SHOW**

**SATURDAY, OCTOBER 14, 2023**  
**11:00 AM – OCT 15, 5:00 PM**

**32975 ALVARADO-NILES RD**  
**UNION CITY, CA 94587**

Exhibition of Bonsai trees, plant sales, and vendors. Free admission and free parking. Demonstrations on both days at 1:30 pm, featuring Jonas Dupuich on Saturday and Yamato Bonsai Kai Club demonstrator Howard Correa on Sunday. For updates find us on Facebook at "Yamato Bonsai Kai"

Demonstration trees will be raffled off as grand prize each day. For more info and updates find us on Facebook by searching "Yamato Bonsai Kai".

Phone: (+1) 510-378-9150

Email: [irishfishboy@yahoo.com](mailto:irishfishboy@yahoo.com)

## **GSBF RENDEZVOUS**

**FRIDAY, OCTOBER 20, 2023**

**HOTEL MISSION DE ORO  
13070 CA-33  
SANTA NELLA, CA 95322**

Bonsai Sales ▪ Auction ▪ Workshops ▪  
Lectures ▪ Community.

## **CAPITAL CITY BONSAI SHOW**

**SATURDAY, OCTOBER 21, 2023**

**3330 MCKINLEY BLVD  
SACRAMENTO, CA 95816**

This group show features tree and suise-ki displays from participating area clubs.

Trees ▪ Stones ▪ Kusamono ▪ Demos ▪  
Vendor and member sales area. Watch for more details as the date nears. For more information contact Paul Holzen, Pres. Capital City Bonsai Assoc. at: [pbholtzen@sbcglobal.net](mailto:pbholtzen@sbcglobal.net) 🌳



# Resources

## BONSAI RESOURCES

Here are some resources for bonsai materials, both online and in-person.

This is a work in progress, please send suggestions in and we'll make this an even better list.

### LOCAL PROFESSIONALS

Jonas Dupuich — Bonsai Tonight  
Eric Schrader — Bonsaify  
Matthew Walker — Bonchi Bonsai  
Peter Tea  
Boon Manakitivipart

### MATERIALS

Bonsai Tonight  
Bonsaify  
Bonchi Bonsai  
First Branch Bonsai  
Lone Pine Gardens  
Mendocino Coast bonsai  
Evergreen Garden Works  
Driftwood Bonsai  
Carman's Nursery (bonsai starters and nursery material)

### EDUCATION

Mirai Live  
Bonsai U  
Bonsai Empire

### MUSEUMS AND ASSOCIATIONS

Golden State Bonsai Federation  
Bonsai Gardens at Lake Merritt  
The National Bonsai and Penjing Museum  
at The United States National Arboretum

### BLOGS

Peter Tea Bonsai  
Bonsai Tonight  
The Art of Bonsai Project  
Bonsai Empire

# Minutes

2023 March Board meeting Agenda and Minutes  
March 13, 2023 at 7:15pm

Attending  
Board Members: Tung, Susan, Brendan, Gwynessa  
Committee Members: Art  
Members: None

BAR: Board Action Required  
MSC: Motioned, Seconded, Carried

BAR: Allow for half year memberships for new members only  
Suggestion by Tung: People who join in July/August should only pay half year's dues

MSC: Susan Tung Brendan Gwynessa  
BAR: Bookkeeping

Tung can do it for now with GNUCash.  
MSC: Susan Tung Brendan Gwynesssa

BAR: USPS PO Box  
Get the new PO box and update our address with state and federal

MSC: Susan Tung Brendan Gwynessa  
Discuss/BAR: Show

Our venue will be under construction and unavailable this year.  
Jay is working on this for us.

BAR: GSBF Donation

We voted on \$50 back in Jan/Feb, vote to increase to \$75?

MSC: Susan Tung Brendan Gwynessa to up donation to \$75

FYI: GSBF member growth form (Dan)

We have submitted our thoughts on the matter to Dan who will be handling the matter

BAR: Make docenting strongly encouraged thing for new members?

Art is suggesting we add a note on this matter to the application form.

Explain benefits, encourage if people are able to docent, quick explanation on docenting in application

MSC: Susan Tung Brendan Gwynessa to update application to encourage new members to docent.

BAR: make roster sheet with only basic contact info available online if password protected and accessible only by members of the club. Members can choose to opt out if requested.

MSC: Susan Tung Brendan (Brendan wants to make sure that only if it's easy, don't spend too much time) Gwynessa

BAR: GSBF Membership and Insurance Update, remove the mention of fees for non-members on the 3rd Tuesday meetings.

MSC: Susan Tung Brendan Gwynessa

Financials as of 2023-02-28

## Marin Bonsai Club Income Statement

<b>Revenues</b>		
<u>Income</u>		\$0.00
Membership Dues	\$1,120.00	
Raffle Proceeds	\$126.00	
Workshop Dues	\$30.00	
<b>Total Revenue</b>		<b>\$1,276.00</b>
<b>Expenses</b>		
<u>Expenses</u>		\$0.00
Club Materials	\$208.99	
Demonstrator	\$450.00	
Demonstrator Donors	\$25.00	
Online Services	\$0.00	
Internet Services	\$29.82	
Silent Auction Proceeds	\$44.00	
<b>Total Expenses</b>		<b>\$757.81</b>
Net Income for Period		\$518.19

## Marin Bonsai Club Balance Sheet 2023-12-31

<b>Assets</b>		
<u>Assets</u>		\$0.00
Current Assets		\$0.00
Petty Cash	\$30.00	
Checking Account	\$8,388.81	
Savings Account	\$0.00	
Imbalance USD		\$0.00
<b>Total Assets</b>		<b>\$8,418.81</b>
<b>Liabilities</b>		
<u>Liabilities</u>		\$0.00
Credit Card	\$0.00	
<b>Total Liabilities</b>		<b>\$0.00</b>
<b>Equity</b>		
<u>Equity</u>		\$0.00
Opening Balances	\$7,900.62	
<b>Retained Earnings</b>		<b>\$518.19</b>
<b>Total Equity</b>		<b>\$8,418.81</b>
<b>Total Liabilities &amp; Equity</b>		<b>\$8,418.81</b>



# Membership Application and Renewals

**NAME****DATE****I AM A**

- ☐ NEW MEMBER  
☐ RETURNING MEMBER

**PLEASE CHOOSE YOUR MEMBERSHIP**

- ☐ SINGLE (\$45)      ☐ HOUSEHOLD (\$65)      ☐ STUDENT (\$25)

**ADDRESS****CITY****STATE****ZIP****EMAIL**

Please keep your email up to date to receive important updates from the club such as newsletters, shows, and events. We will not share your email outside of our club.

**PHONE**

- ☐ CELL      ☐ HOME

**HOW DID YOU HEAR ABOUT THE CLUB?****HOW I CAN HELP THE CLUB****MONTHLY MEETINGS/WORKSHOPS**

- ☐ RAFFLE EVENTS  
☐ WORKSHOPS  
☐ PROGRAMS  
☐ PUBLICITY  
☐ BOARD MEMBER  
☐ OTHER: \_\_\_\_\_

**ANNUAL ACTIVITIES**

- ☐ DOCENT AND OTHER SUPPORT AT BGLM  
☐ SETUP/DOCENT MARIN COUNTY FAIR SHOW  
☐ AUCTION COMMITTEE  
☐ HOLIDAY PARTY

Each member of the club is encouraged to volunteer at monthly and yearly club activities. Please check at least two areas where you can contribute to the club. **Docenting at BGLM is especially encouraged for new members.** Thank you!

Make checks payable to **MARIN BONSAI CLUB**

Please send your check and application to

**MARIN BONSAI CLUB  
PO BOX 6645  
SAN RAFAEL, CA 94903**